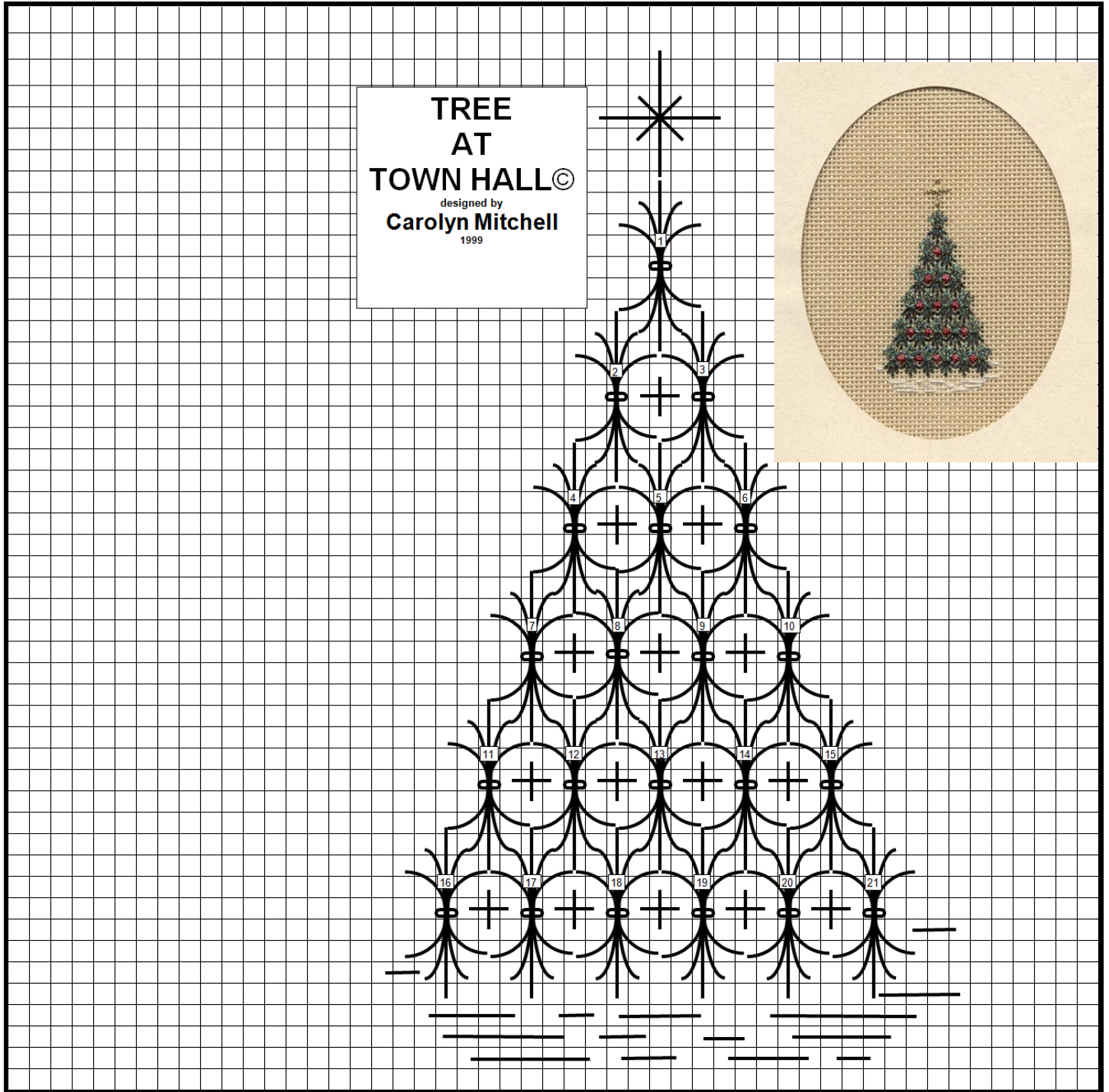


TREE AT TOWN HALL©

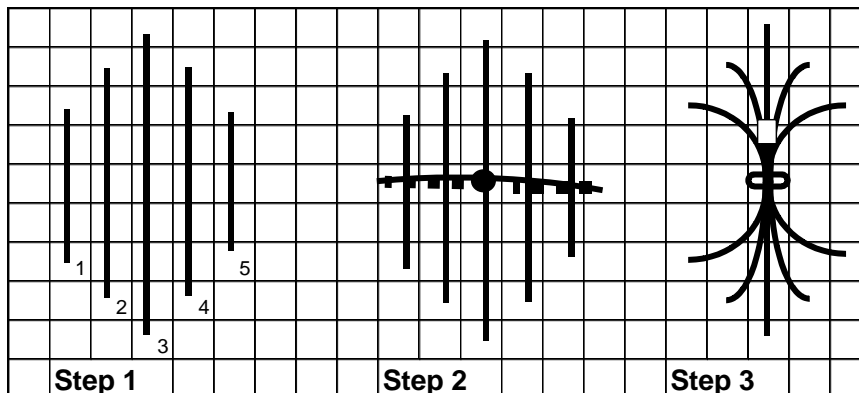


Materials:

- #18 Canvas – 6” by 4” – Eggshell or Mushroom
- #16 Braid by *Kreinik* - #031 (for lights)
- #8 Braid by *Kreinik* - #32 (for snow)

- #12 Braid by *Kreinik* - #085 (for tree & date)
- 1/16th” Ribbon by *Kreinik* - #002 (for star)

Tree: Shell Stitch - #12 Braid #085



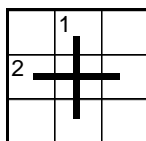
Step 1: Make the Hungarian Stitch as shown.

Step 2: Come up in the centre of the Hungarian Stitch (Large dot). Do not pierce the thread of the centre stitch. Slip the needle under the threads to the left. Come over the Hungarian threads and slip the needle under the threads, taking the needle back down in the centre.

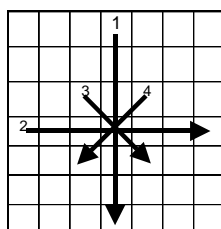
Step 3: Pull tight to form a shell effect. This stitch is also known as a Sheaf Stitch.

Follow the Master Chart for Placing the Shell Stitches (21 Stitch units).

Lights: Upright Cross - #031 - #16 Braid. These are placed in the spaces created by the Shell Stitch (make 15 upright crosses).



Star: Double Straight Stitch - 1/16th Ribbon. Follow the Master chart for placement at the top of the tree.



Snow: Using #8 Braid colour #32 place random Straight Lines. See Master Chart for placement